

A black and white line drawing of a church steeple. The steeple has a square base with two circular clock faces, each with a cross design. Above the base is a smaller square section with vertical lines, and at the top is a tall, pointed spire. The drawing is partially cut off at the bottom by a horizontal line.

A black and white line drawing of a church steeple. The steeple has a square base with two circular clock faces, each with a cross design. Above the base is a smaller square section with vertical lines, and at the top is a tall, pointed spire. The drawing is partially cut off at the bottom by a horizontal line.

A black and white line drawing of a church steeple. The steeple has a square base with two circular clock faces, each with a cross design. Above the base is a smaller square section with vertical lines, and at the top is a tall, pointed spire. The drawing is partially cut off at the bottom by a horizontal line.

A black and white line drawing of a church steeple. The steeple has a square base with two circular clock faces, each with a cross design. Above the base is a smaller square section with vertical lines, and at the top is a tall, pointed spire. The drawing is partially cut off at the bottom by a horizontal line.

A black and white line drawing of a church steeple. The steeple has a square base with two circular clock faces, each with a cross design. Above the base is a smaller square section with vertical lines, and at the top is a tall, pointed spire. The drawing is partially cut off at the bottom by a horizontal line.

A black and white line drawing of a church steeple. The steeple has a square base with two circular clock faces, each with a cross design. Above the base is a smaller square section with vertical lines, and at the top is a tall, pointed spire. The drawing is partially cut off at the bottom by a horizontal line.

THE WORD

Old Testament Scripture

Isaiah 40:31

Epistle

Ephesians 5:8–9

Gospel

Luke 10:25–28

Sermon/Remarks about Betty

*Hymn 105
v.1&4

People, Look East

BESANÇON

Reading

Pied Beauty

Gerald Manely Hopkins

Anthem

The Lord is My Shepherd (Psalm 23)

John Rutter

Remarks

Steve Theg

Reading

“Circle Down”

By Betty Miller

The Lord’s Prayer

**Our Father, who art in heaven, hallowed be thy name,
thy kindom come, thy will be done, on earth as it is in heaven.
Give us this day our daily bread;
and forgive us our debts, as we forgive our debtors;
and lead us not into temptation, but deliver us from evil.
For thine is the kindom, and the power, and the glory, forever. Amen.**

COMMENDATION

Prayer

Leader: Live together in peace, caution the careless, encourage the fainthearted, support the weak and be patient with everyone.

People: See to it that no one pays back wrong for wrong, but always make it your job to do good to one another and to all people.

Leader: Be joyful, pray continually; be thankful in all circumstances, for this is what God wants from you in your life. Pray for each other, brothers and sisters. Finally, whatever is true, whatever is honorable, and whatever is just, whatever is pure, whatever is lovely, whatever is gracious, if there is any excellence, if there is anything worthy of praise, think about these things. What you have learned and received and heard and seen in Jesus, do; and the God of Peace will be with you.

Choral Response

A Gaelic Blessing

John Rutter

*Deep peace of the running wave to you
Deep peace of the flowing air to you
Deep peace of the quiet earth to you
Deep peace of the shining stars to you
Deep peace of the gentle night to you*

*Moon and stars pour their healing light on you
Deep peace of Christ,
Of Christ the light of the world to you
Deep peace of Christ to you*

Reading

On the Day I Die

Rumi

*Charge

*Hymn 664

Morning Has Broken

BUNESSAN

*Benediction

Voluntary

When in the Hour of Utmost Need

J.S. BACH

ANNOUNCEMENTS

Reception: Betty's church family welcomes you to a reception in the Westminster Room following the service. Please feel free to enter without forming a line, greeting the family as the opportunity arises.

Restrooms are located in this building through the door at the end of each ground floor aisle of the sanctuary.

An induction loop system is available in the sanctuary. To use the system, switch your compatible hearing aid to the T-telephone mode or request a wireless headset from an usher.

Large Print Versions of the *Glory to God* hymnal and worship bulletin are available from ushers.

SERVING IN THE LITURGY

OFFICIANT	Rev. Mark Thomas
	Jessica Hovick
	Shannon Hovick
	Chris Theg
	Alex Theg
READERS	Sam Theg
	Christina Riccardi
	Elizabeth Riccardi
	Casey Miller Hovick
ORGANIST	Victoria Coey
SOLOIST	Ken Kronholz, trumpet
	Bill Kennedy, clarinet
VIDEO TEAM LEAD	Chris Corzine

Rev. Glenn Hodges, Designated Pastor
Rev. Dr. Greta Reed, Parish Associate
Dr. Bryan Stenson, Director of Music
Victoria Coey, Organist
Fran Owens, Financial Administrator
Becky Brown, Custodian and Sunday Host

First Presbyterian Church
110 North Adams Street
Tallahassee, FL 32301
Email: office@oldfirstchurch.org



Phone: (850) 222-4504
Fax: (850) 222-2215
www.facebook.com/oldfirstchurch
Website: www.oldfirstchurch.org

This Is What You Shall Do

by Walt Whitman

This is what you shall do:

Love the earth and sun and the animals,
Despise riches, give alms to everyone that asks,
Stand up for the stupid and crazy,
Devote your income and labors to others,
Hate tyrants, argue not concerning God,
Have patience and indulgence toward the people

...

And your very flesh shall be a great poem

Immortal, Invisible, God Only Wise 12

1 Im - mor - tal, in - vis - i - ble, God on - ly wise,
 2 Un - rest - ing, un - hast - ing, and si - lent as light,
 3 To all, life thou giv - est, to both great and small.
 4 Thou reign - est in glo - ry; thou dwell - est in light.

in light in - ac - ces - si - ble hid from our eyes,
 nor want - ing, nor wast - ing, thou rul - est in might:
 In all life thou liv - est, the true life of all.
 Thine an - gels a - dore thee, all veil - ing their sight.

most bless - ed, most glo - rious, the An - cient of Days,
 thy jus - tice, like moun - tains high soar - ing a - bove;
 We blos - som and flour - ish like leaves on the tree,
 All praise we would ren - der; O help us to see

al - might - y, vic - to - rious, thy great name we praise.
 thy clouds, which are foun - tains of good - ness and love.
 then with - er and per - ish; but naught chang - eth thee.
 'tis on - ly the splen - dor of light hid - eth thee!

The opening line of this hymn was inspired by the three divine attributes listed in 1 Timothy 1:17 (King James Version), and it continues by considering how God's life exceeds our own finite existence. The text is well set to a Welsh melody shaped by many three-note units.

In the Bleak Midwinter

144



1 In the bleak mid-win-ter, frost-y wind made moan;
 2 Our God, heaven can-not hold him, nor earth sus-tain;
 3 An-gels and arch-an-gels may have gath-ered there;
 4 What can I give him, poor as I am?



earth stood hard as i-ron, wa-ter like a stone;
 heaven and earth shall flee a-way when he comes to reign:
 cher-u-bim and ser-a-phim thronged the air;
 If I were a shep-herd, I would bring a lamb;



snow had fall-en, snow on snow, snow on snow,
 in the bleak mid-win-ter a sta-ble place suf-ficed
 but his moth-er on-ly, in her maid-en bliss,
 if I were a wise man, I would do my part;



in the bleak mid-win-ter, long a-go.
 the Lord God in-car-nate, Je-sus Christ.
 wor-shipped the be-lov-ed with a kiss.
 yet what I can I give him: give my heart.



Though this text describes winter weather in England rather than in Palestine, the poet is using familiar surroundings as a means of making the Nativity more immediate and personal. The tune name honors a Gloucestershire village near the composer's birthplace in Cheltenham.

105

People, Look East

1 Peo - ple, look east. The time is near of the
 2 Fur - rows, be glad. Though earth is bare, one more
 3 Birds, though you long have ceased to build, guard the
 4 Stars, keep the watch. When night is dim one more
 5 An - gels, an-nounce with shouts of mirth Christ who

crown - ing of the year. Make your house fair as you are
 seed is plant - ed there. Give up your strength the seed to
 nest that must be filled. E - ven the hour when wings are
 light the bowl shall brim, shin - ing be - yond the frost - y
 brings new life to earth. Set ev - ery peak and val - ley

Peo - ple, look
 a - ble; trim the hearth and set the ta - ble.
 nour - ish, that in course the flower may flour - ish.
 fro - zen God for fledg - ing time has cho - sen.
 weath - er, bright as sun and moon to - geth - er.
 hum - ming with the word, the Lord is com - ing.

This text was written to provide a new Advent text for an existing carol tune, here named for the city in eastern France where it originated. The author has imaginatively expressed the cosmic implications of Christ's coming by addressing each stanza to a part of creation.

JESUS CHRIST: ADVENT

east and sing to - day:



Peo - ple, look east:

Love, the Guest, is on the way.

Love, the Rose, is on the way.

Love, the Bird, is on the way.

Love, the Star, is on the way.

Love, the Lord, is on the way.

Peo - ple, look east:

(Love is on the way.)

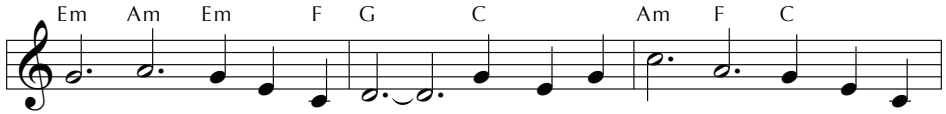


Morning Has Broken

664



1 Morn-ing has bro - ken like the first morn - ing; black-bird has
 2 Sweet the rain's new fall sun - lit from heav - en, like the first
 3 Mine is the sun - light! Mine is the morn - ing, born of the



spo - ken like the first bird. Praise for the sing - ing! Praise for the
 dew - fall on the first grass. Praise for the sweet-ness of the wet
 one light E - den saw play! Praise with e - la - tion; praise ev - ery



morn - ing! Praise for them, spring - ing fresh from the Word!
 gar - den, sprung in com - plete - ness where God's feet pass.
 morn - ing, God's re - cre - a - tion of the new day!

This 20th-century text was created to provide words for this traditional tune named for a small village on the Isle of Mull, off the west coast of Scotland. Through repeated use of "new" and "first," each morning is treated as a re-creation of the promise of the original day.